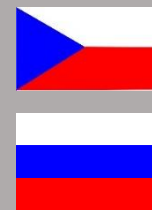


«ZIMATECHNIK Ltd.»

Development – Engineering – Delivery



ZIMATECHNIK s.r.o.
Na Balkáně 61
582 63 Ždírec nad Doubravou
CZECH REPUBLIC



ZIMATECHNIK Ltd., is a company that is engaged in foreign trade in the energy sectors, engineering, infrastructure, machinery and transport equipment and offers outsourcing services of the technological industrial services.

Basic services also include project management and provision of export financing.

ZIMATECHNIK is a fast growing company and able to respond quickly to customer requirements, including providing funding for large investment projects.

ZIMATECHNIK provides commercial activities for companies as DAKO CZ a.s., Hanácké železárny a pérovny a.s., Strojírna Oslavany s.r.o., Mikon s.r.o., Tribotec s.r.o., ZPA Nova Paka a.s., Aumeto s.r.o., Prokop Invest s.r.o. and other contractual partner companies in the Czech and Slovak Republic, namely in the areas with a rapidly developing economy.

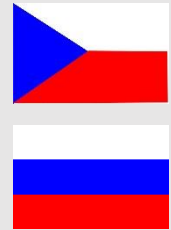
The company offers tramcar design for transport companies and tramcar manufacturers, offers projecting of tramcar and metro bogies at customer's site and has references to its activity in the Russian Federation and other countries.

Together with its partners the company is also able to project and delivery new whole tramcars as well as metro wagons.

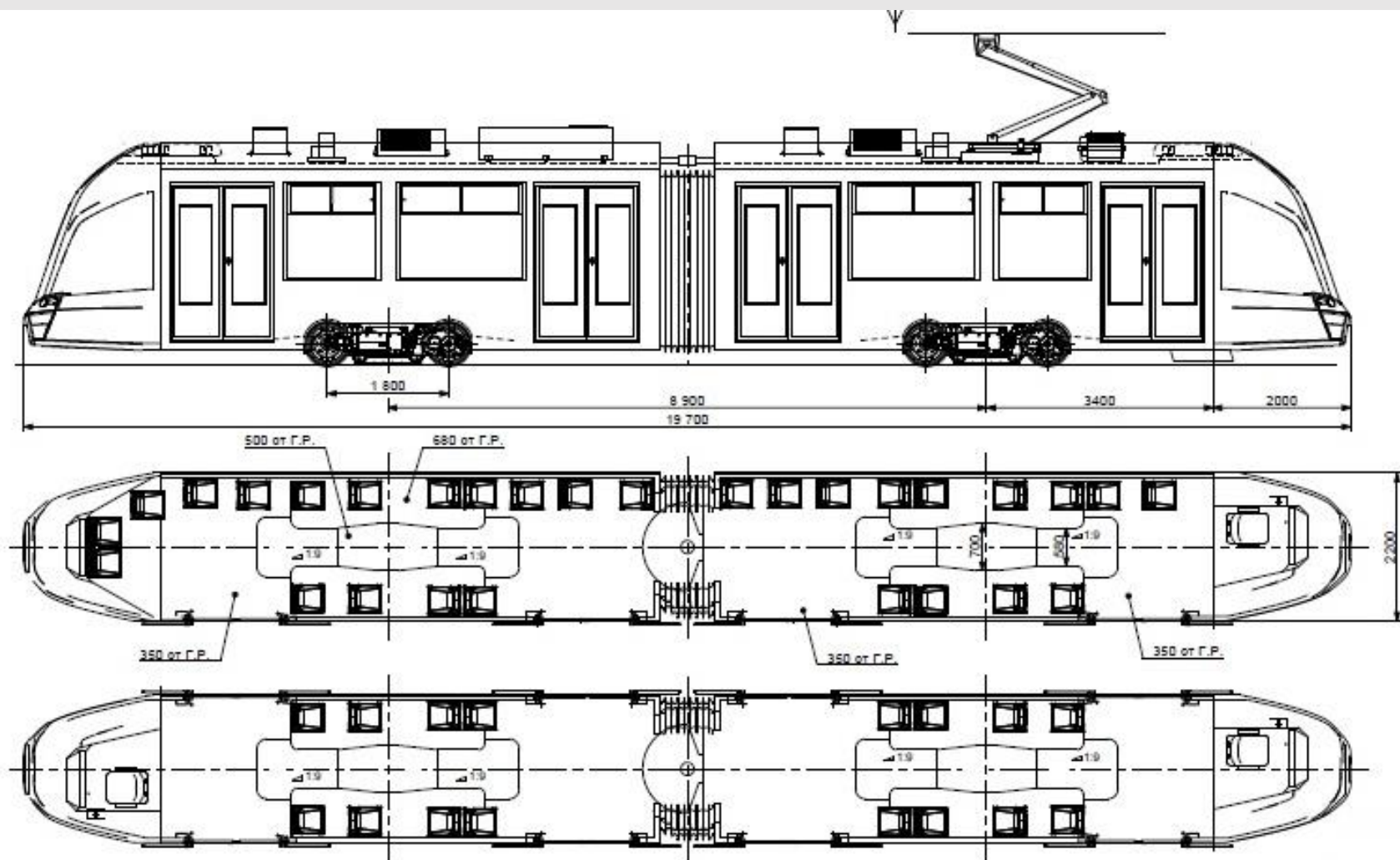


Two sectional low-floor tram car

- Development
- Engineering
- Delivery



ZIMATECHNIK offers delivery of 100% low-floor two sectional tram cars of modular universal execution according to the customer wishes.

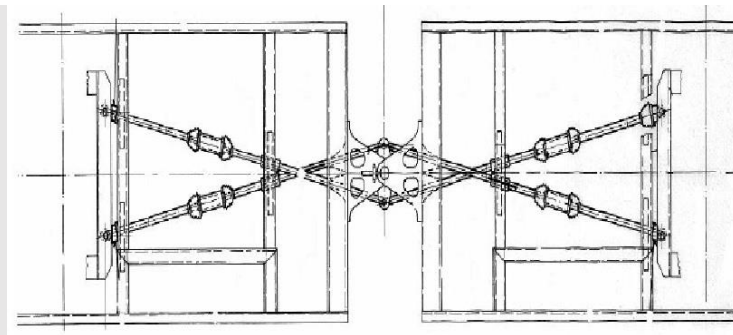
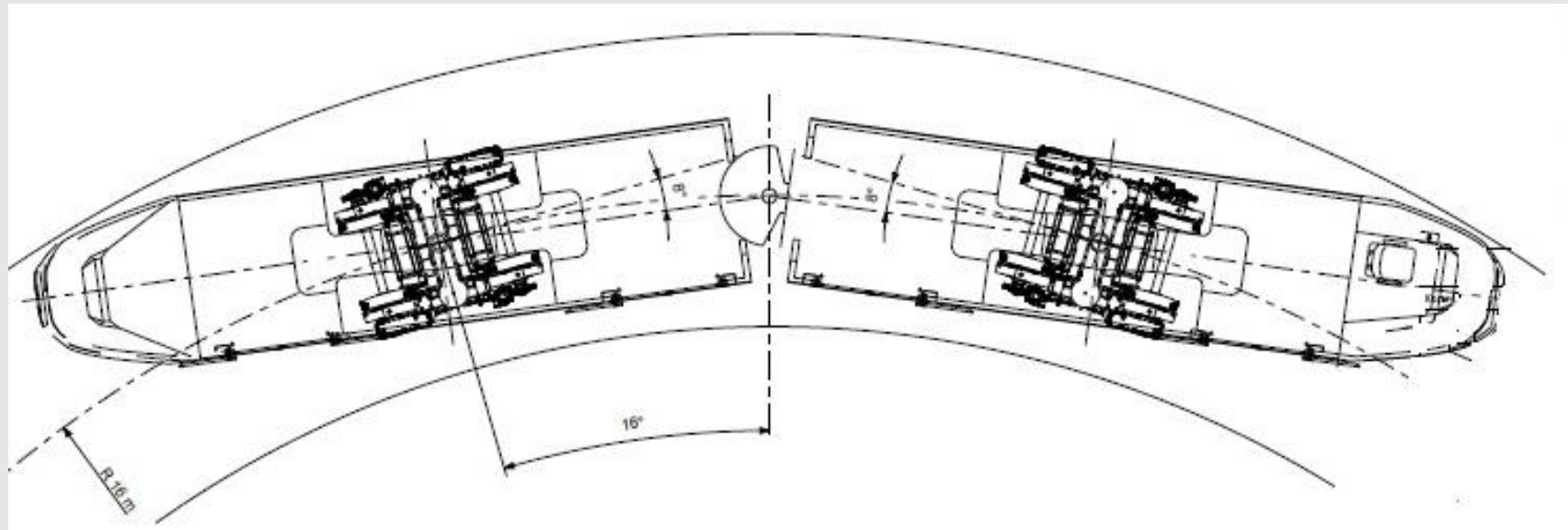


- **The same coachwork frame is used for the 1. and 2. section**
- **Possibility of execution with one or two cabins for the driver**
- **Possibility of execution with doors to the right, to the left or from both sides**
- **Ability to adapt existing customer cabin**
- **Rail track 1000 mm (bogie)**
- **100% low floor construction**
- **Ability to adapt trolleys for the necessary infrastructure in the cities**
- **Documentation in accordance with GOST, EN**

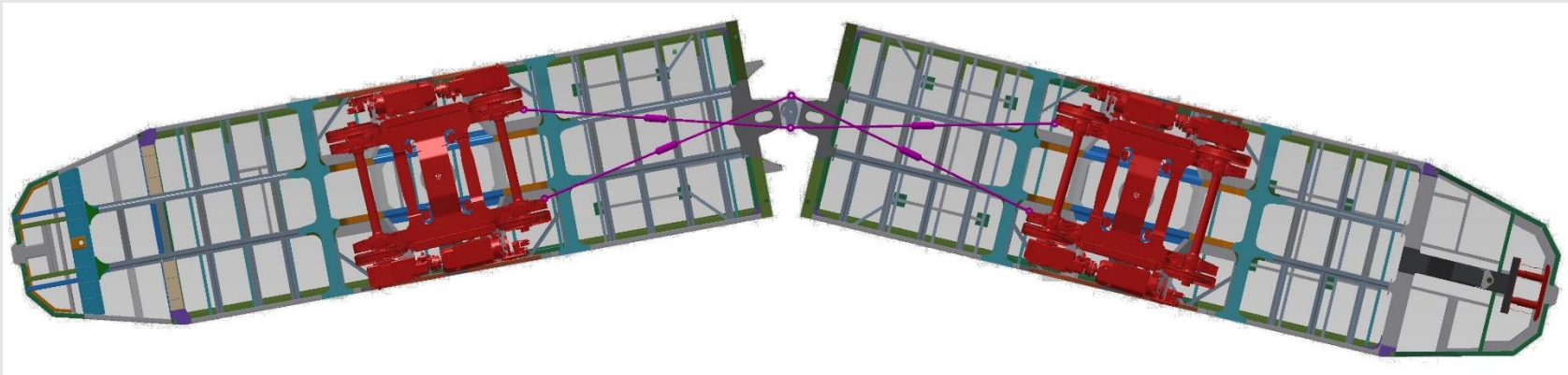


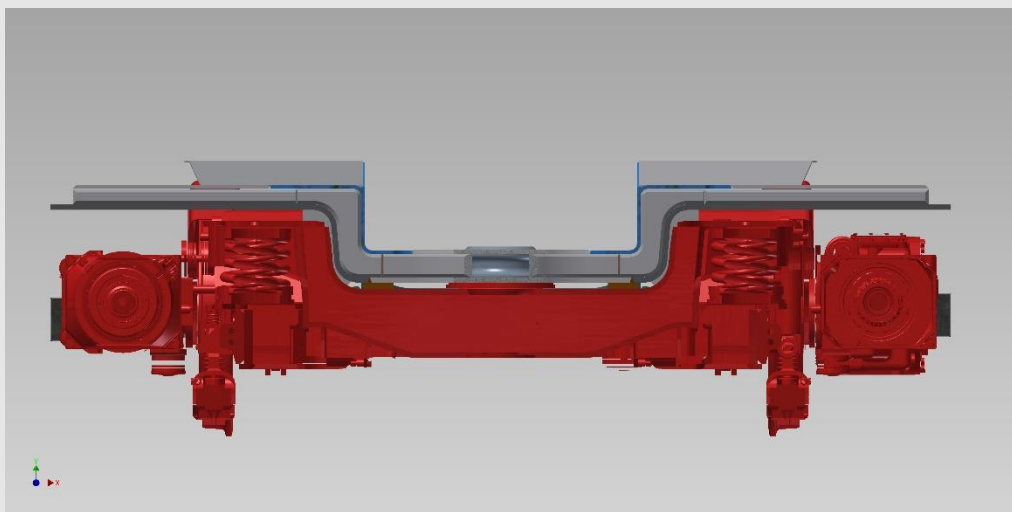
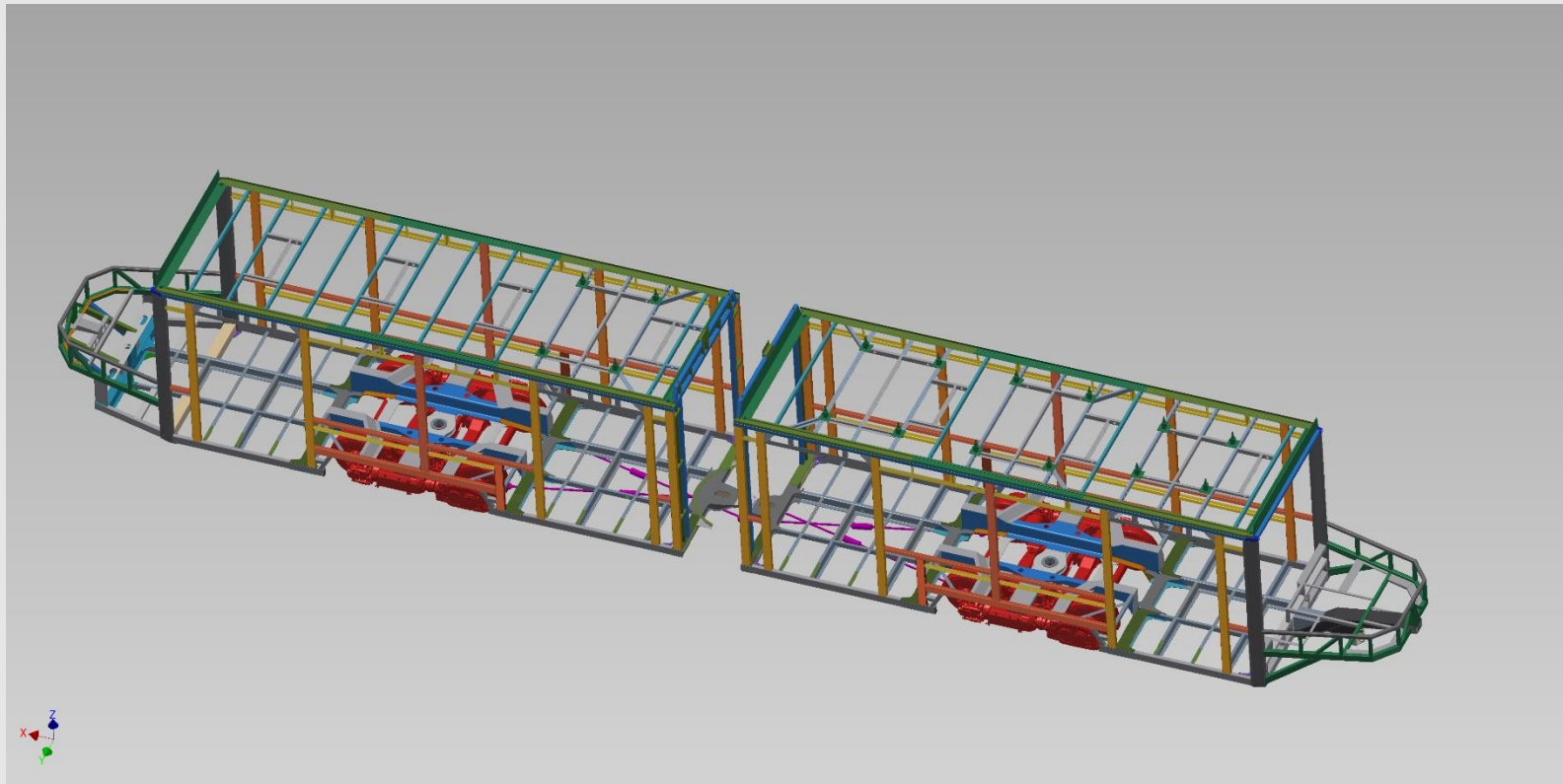
PRELIMINARY TECHNICAL CHARACTERISTICS

Parameters	
Length of the car, mm	19 700
Width of the car, mm	2 200
Floor height, mm	350
Boggies	Revolving with the chassis junction
Brakes	Electromechanical or hydraulic
One cabin and doors on one side:	
Number of seats	45
Passenger capacity (8 people / m ²)	170

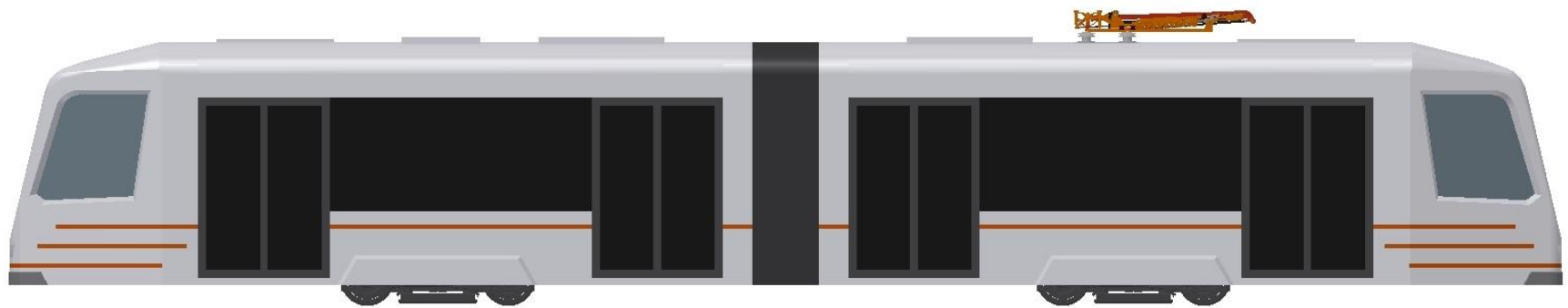


Scheme of the chassis junction









Contact:

ZIMATECHNIK s.r.o.

Na Balkáně 61,
582 63 Ždírec nad Doubravou
Czech Republic
Comp. Reg. No.: 49825496, TIN: CZ4982549



Viktor Kuna

Export Director
Tel.: +420 733 125 012
Email: viktor.kuna@zimatechnik.cz

Robert Málek

Managing Director
Tel.: +420 739 337 817
Email: robert.malek@zimatechnik.cz

